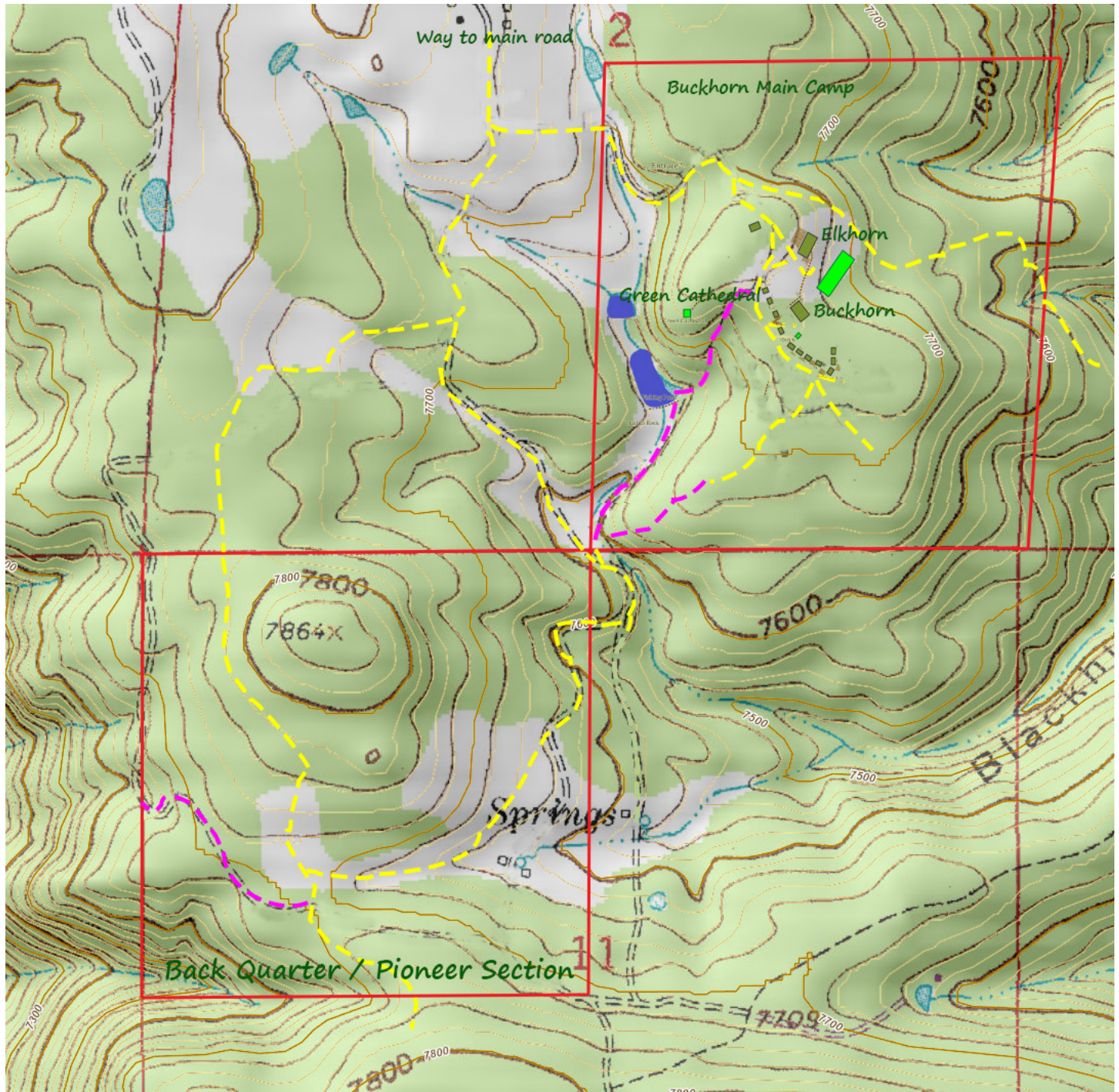


Buckhorn Trail Map

Buckhorn is blessed to have 320 acres divided into two catty corner “quarter” sections. The section on the top right is our main camp with lodges, cabins, ponds, and climbing. The section on the bottom left represents our wilderness section. To pass from one section to the other, either take the drain down from the pond or from Miners camp to the climbing area. Pass beyond the climbing area and exit camp’s gate. We have a short easement allowing hikers to leave our property and then loop back into our Pioneer section.



*Please note that you are hiking at your own risk. Cell phones rarely work. Weather changes at a moments notice, and help is a long ways away. Be prepared and if you get in trouble, don't expect easy access to help. Enjoy!